

ScanShell 800NR for Window 7 PC's

There should be a piece of paper in the printer box that says to go to the website for the preloaded drivers. It has the website on the piece of paper. The website has a list of drivers for all the versions of windows. For Windows 7 there are two drivers, one for 64 bit and one for 32 so you need to know what is running on the PC's.

Once the driver is downloaded and installed just scanner into the PC and let it auto detect. Once it was loaded on the PC it will work in VIEW.

Here is the website:

<http://autorun.card-reader.com/>







You get to this page:



Click on the Green Hardware Only button, and you get this:

CSSN
Card Scanning Solutions

For a hardware, or scanner only purchase, and **DO NOT** have a license key please click on the scanner model image below to download the drivers:

ScanShell® 800NR 	ScanShell® 2000NR 	ScanShell® 800DXN <i>Duplex</i> 
ScanShell® 3100DN <i>Duplex</i> 	MagShell® 900 	ScanShell® 1000NA 

If you are using our hardware or scanner with software that does not belong to Card Scanning Solutions, please refer to your Software manufacturer's manual in order to install our hardware.

We thank you for your purchase. For additional assistance please contact us at www.card-reader.com/support.htm

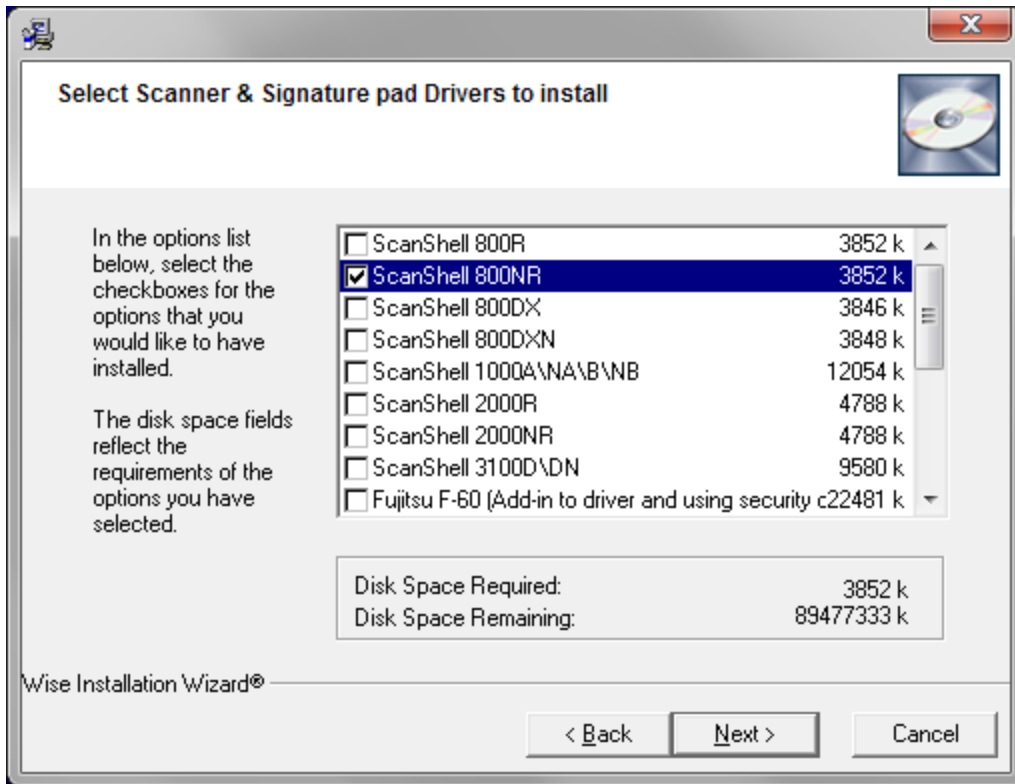
[Back](#)

Click on the Scanshell 800NR, and you get this:



Click on Pre-Install Drivers (recommended), and it will download the preinstall_drive.exe. You download this and run it on each PC with a scanner.

When this starts to run, you get a screen like this:



Make sure you **ONLY** have the 800NR checked, and press Next/Next/Finish. When it is done, you can launch View and use Help/About View to choose your scanner...