



# Epson USB TM Logo Flash Setup



Datamatic cannot accept any responsibility, financial or otherwise, for any consequences arising out of the use of this material. The information contained herein is subject to change. Revisions may be issued to advise of such changes or additions. The information and techniques contained in this document are the property of Datamatic and may not be disclosed in total or in part without the written permission of Datamatic.



## TABLE OF CONTENTS

<b>Step 1: Download and Install the Epson Printer Driver .....</b>	<b>3</b>
<b>Step 2: Run Test Print from VIEW .....</b>	<b>7</b>
<b>Step 3: Download and install TM Logo Utility Ver.2.60Ec .....</b>	<b>8</b>
<b>Step 4: Run the TMFLogo.exe .....</b>	<b>10</b>
<b>Setup Tab.....</b>	<b>10</b>
<b>Bitmap Selection .....</b>	<b>14</b>
<b>Preview.....</b>	<b>15</b>
<b>Logo Upload.....</b>	<b>16</b>
<b>Logo Printout .....</b>	<b>17</b>

Credit Union logos can be uploaded to Epson Thermal Printers. This guide will outline the process to setup the logo on USB Thermal Printers. This document was used to flash the logo on an USB Epson TM88IV model printer.

To proceed with the steps below user must have **Administrator** rights to the PC. Credit Union should contact their PC Vendor for assistance.

## STEP 1: DOWNLOAD AND INSTALL THE EPSON PRINTER DRIVER



### Download Epson POS Advance Printer Driver Version 4.4 (USB Only) – Windows 7/Vista

#### Utilities

Topaz T-LBK462-HSB-R (3.22MB)

Shrewsoft VPN Client (3.19MB)

Epson POS Advance Printer Driver Version 3.0 and Logo Utility (7.07MB)

Epson POS Advance Printer Driver Version 4.4 (USB) - Windows 7/Vista (17.5MB)

Epson TM Flash Logo Setup Utility 2.60 (6.51MB)

Epson TM Flash Logo Setup Utility Instructions

ScanShell 800N Drivers (232KB)

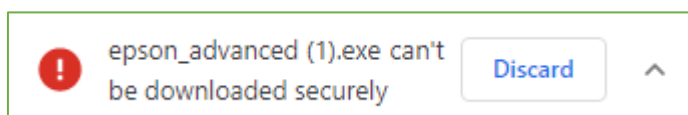
ScanShell 800NR Instructions (Windows 7)



#### Important

If you do experience any issues downloading the VIEW Client Install from our website, right click the link, and select Save Link as....

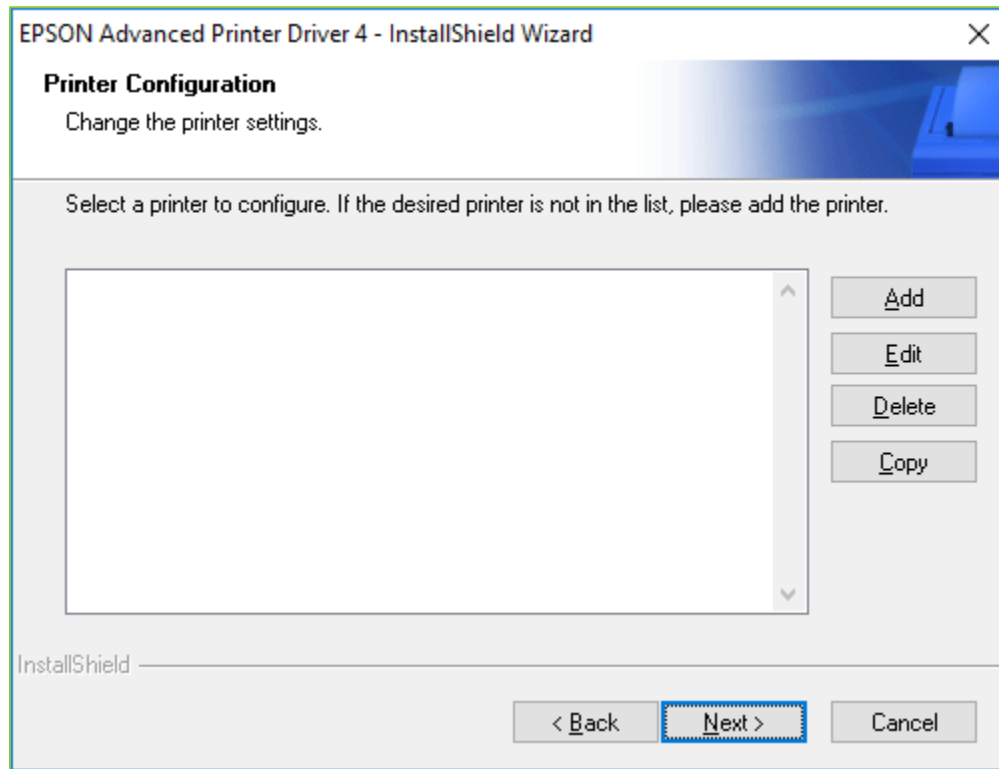
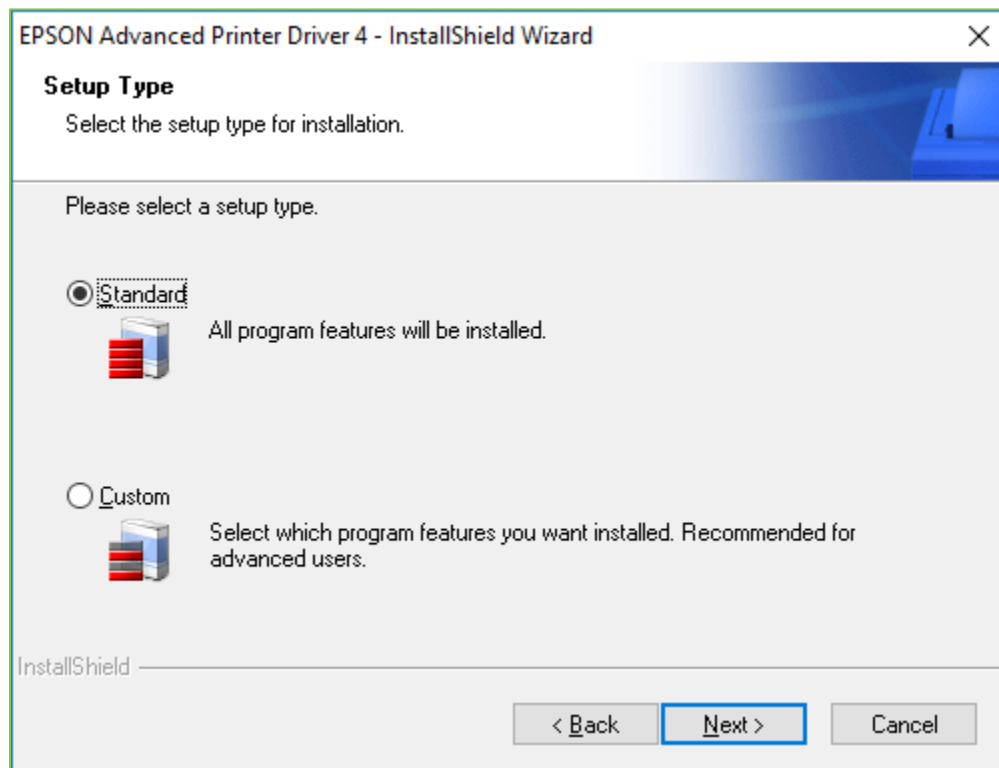
You may have a similar type of security message from the browser



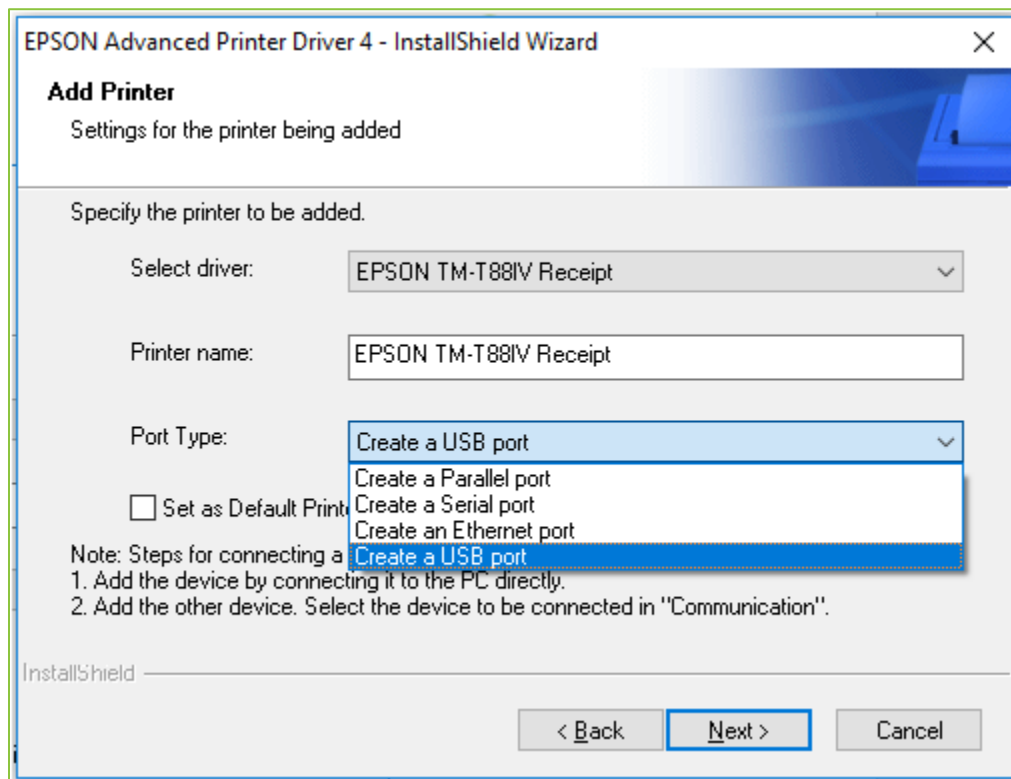
Click the Up Arrow and select Keep.

This will download the file to your PC.

#### Run the install Wizard



Select Create a USB Port



EPSON Advanced Printer Driver 4 - InstallShield Wizard

**Add Printer**  
Settings for the printer being added

Specify the printer to be added.

Select driver: EPSON TM-T88IV Receipt

Printer name: EPSON TM-T88IV Receipt

Port Type: Create a USB port

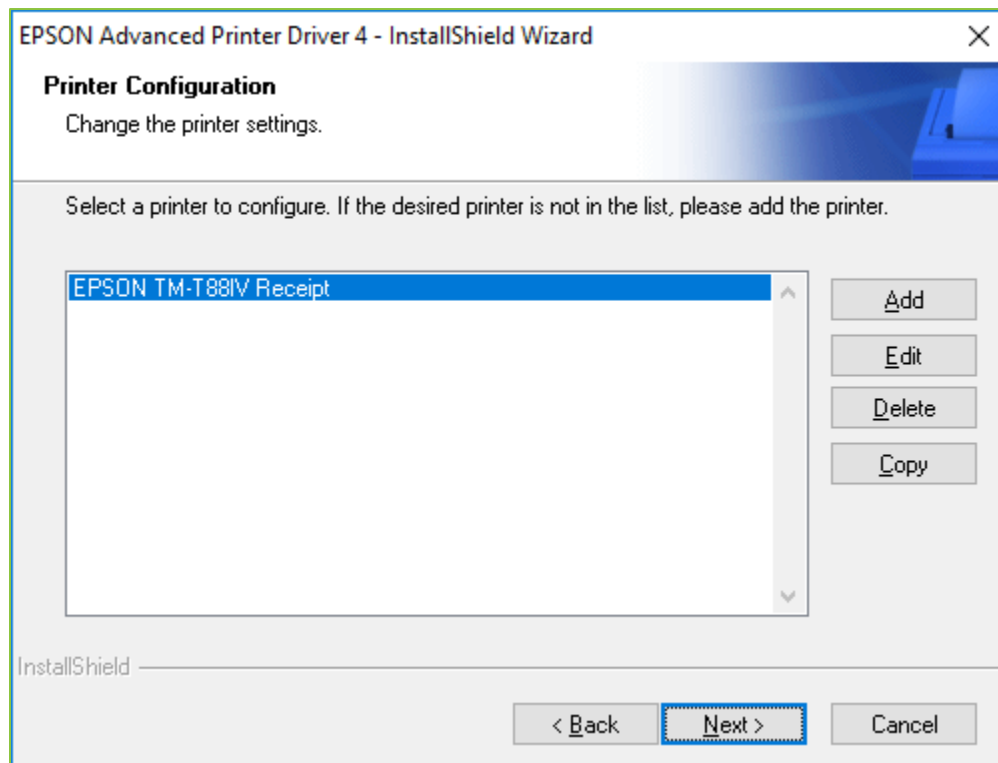
- Create a Parallel port
- Create a Serial port
- Create an Ethernet port
- Create a USB port

Set as Default Printer

Note: Steps for connecting a  
1. Add the device by connecting it to the PC directly.  
2. Add the other device. Select the device to be connected in "Communication".

InstallShield

< Back Next > Cancel



EPSON Advanced Printer Driver 4 - InstallShield Wizard

**Printer Configuration**  
Change the printer settings.

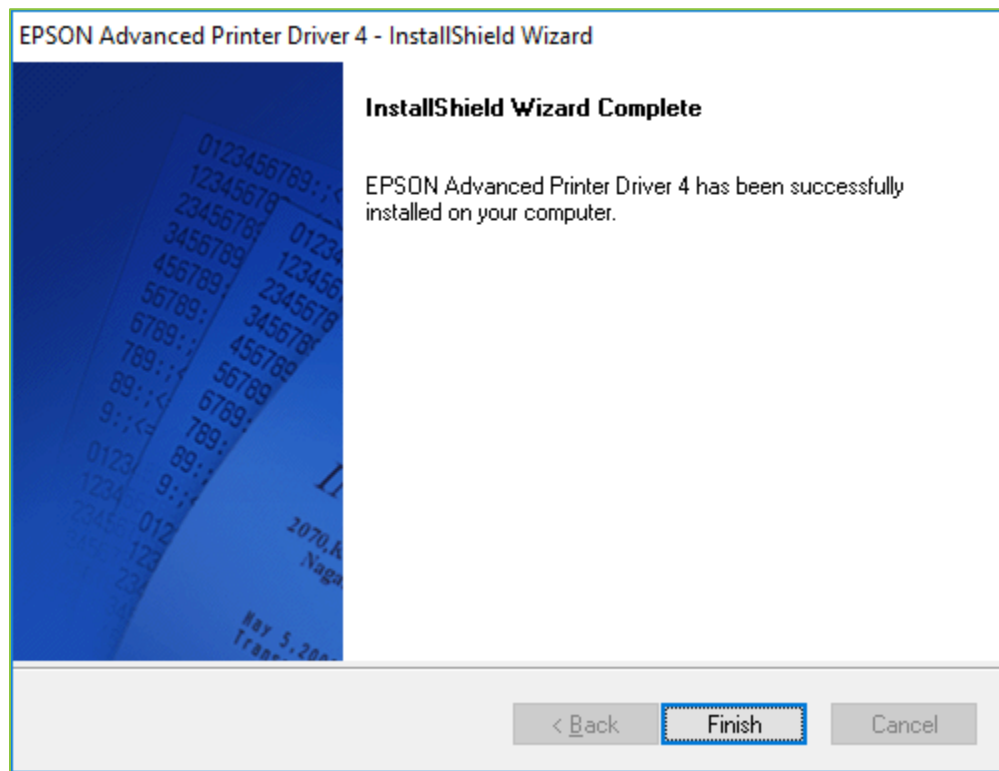
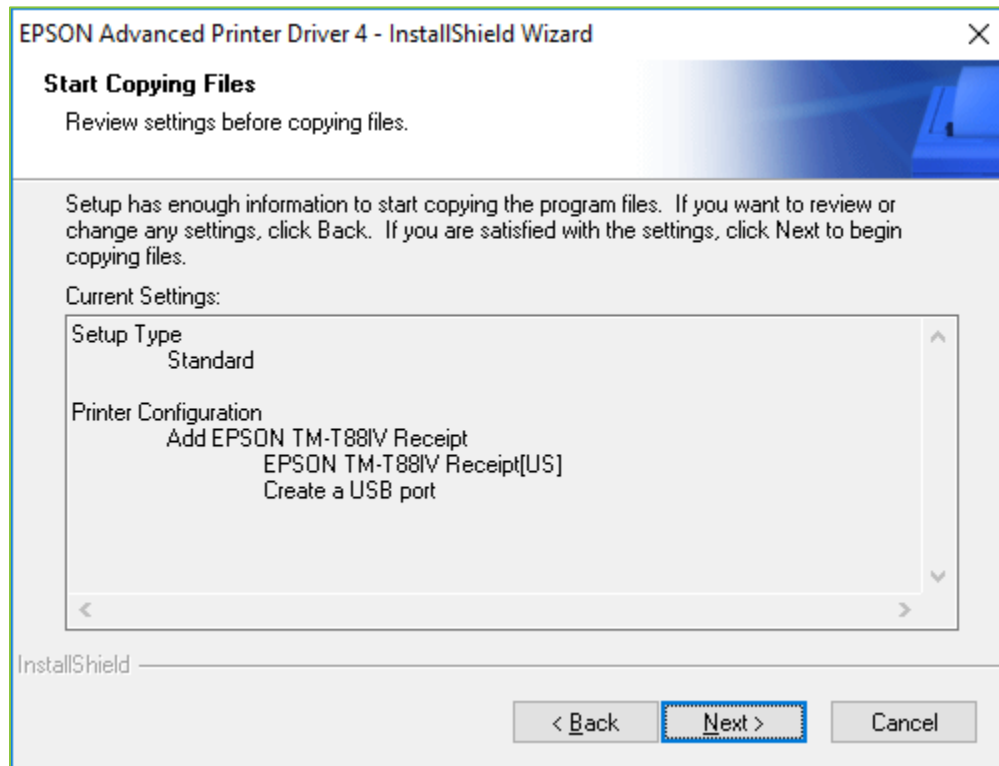
Select a printer to configure. If the desired printer is not in the list, please add the printer.

EPSON TM-T88IV Receipt

Add Edit Delete Copy

InstallShield

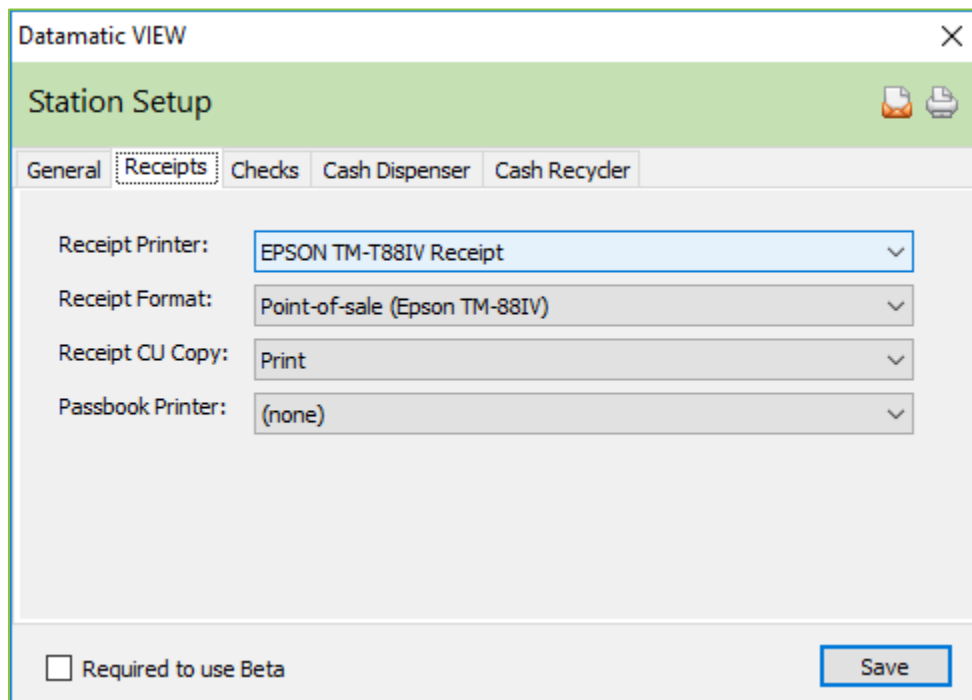
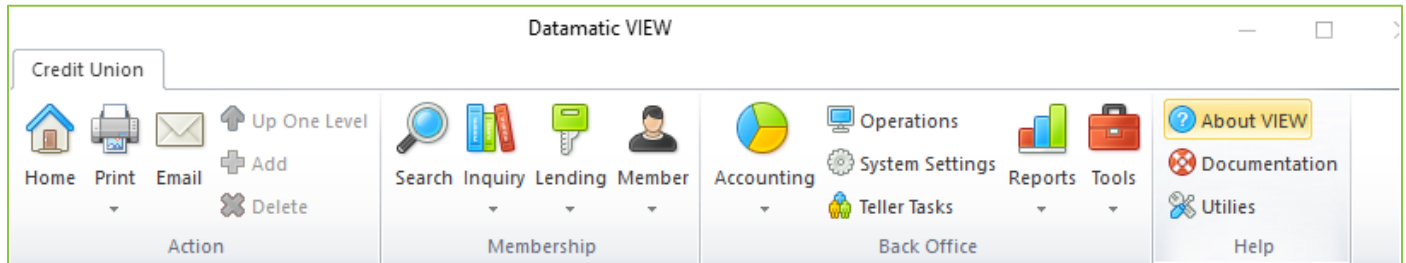
< Back Next > Cancel



## STEP 2: RUN TEST PRINT FROM VIEW

Review station setup to make sure the correct printer is available.

VIEW > Main > About VIEW



Process a transaction to make sure printer can successfully print a receipt in VIEW.

## STEP 3: DOWNLOAD AND INSTALL TM LOGO UTILITY VER.2.60EC



**Download Epson TM Flash Logo Setup Utility 2.60 (6.51MB)**

### Utilities

Topaz T-LBK462-HSB-R (3.22MB)

Shrewsoft VPN Client (3.19MB)

Epson POS Advance Printer Driver Version 3.0 and Logo Utility (7.07MB)

Epson POS Advance Printer Driver Version 4.4 (USB) - Windows 7/Vista (17.5MB)

Epson TM Flash Logo Setup Utility 2.60 (6.51MB)

Epson TM Flash Logo Setup Utility Instructions

ScanShell 800N Drivers (232KB)

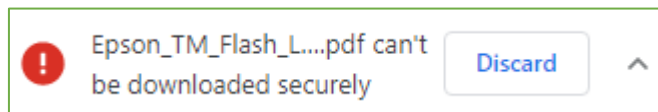
ScanShell 800NR Instructions (Windows 7)



#### Important

If you do experience any issues downloading the VIEW Client Install from our website, right click the link, and select Save Link as....

You may have a similar type of security message from the browser

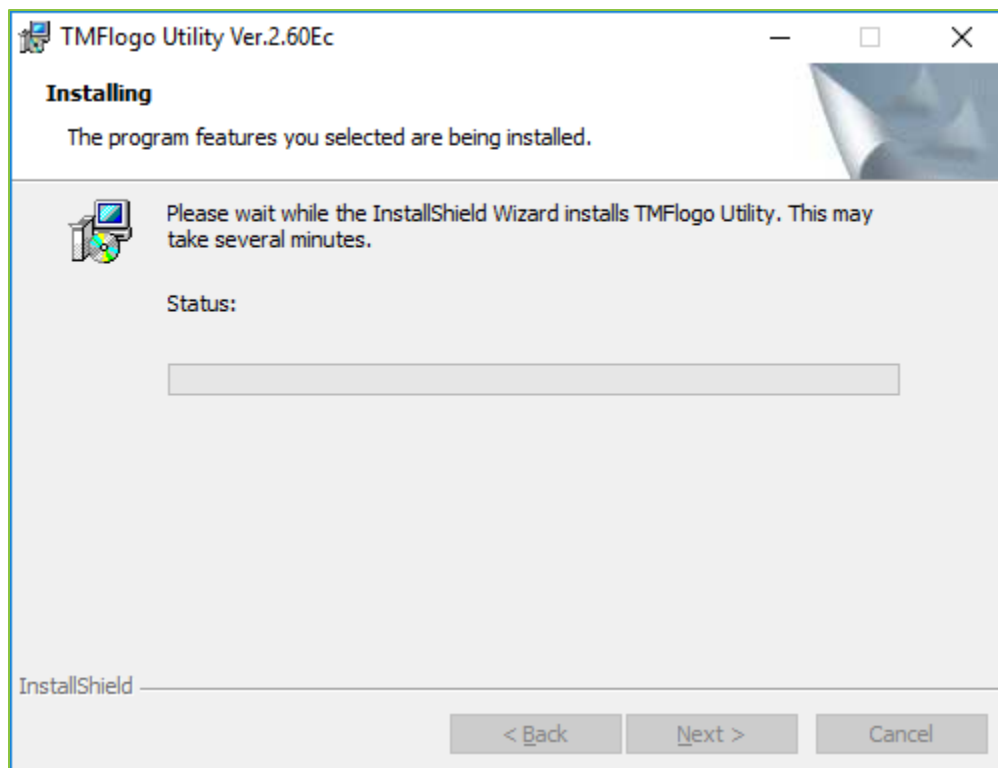
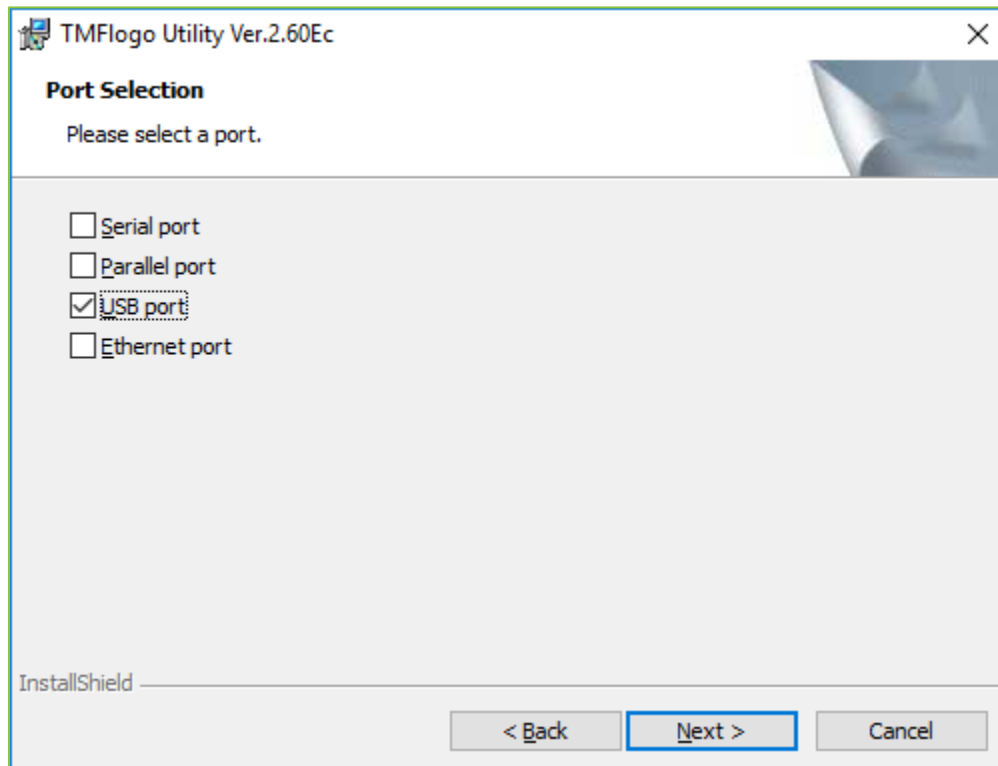


Click the Up Arrow and select Keep.

This will download the file to your PC.

**Run install wizard**





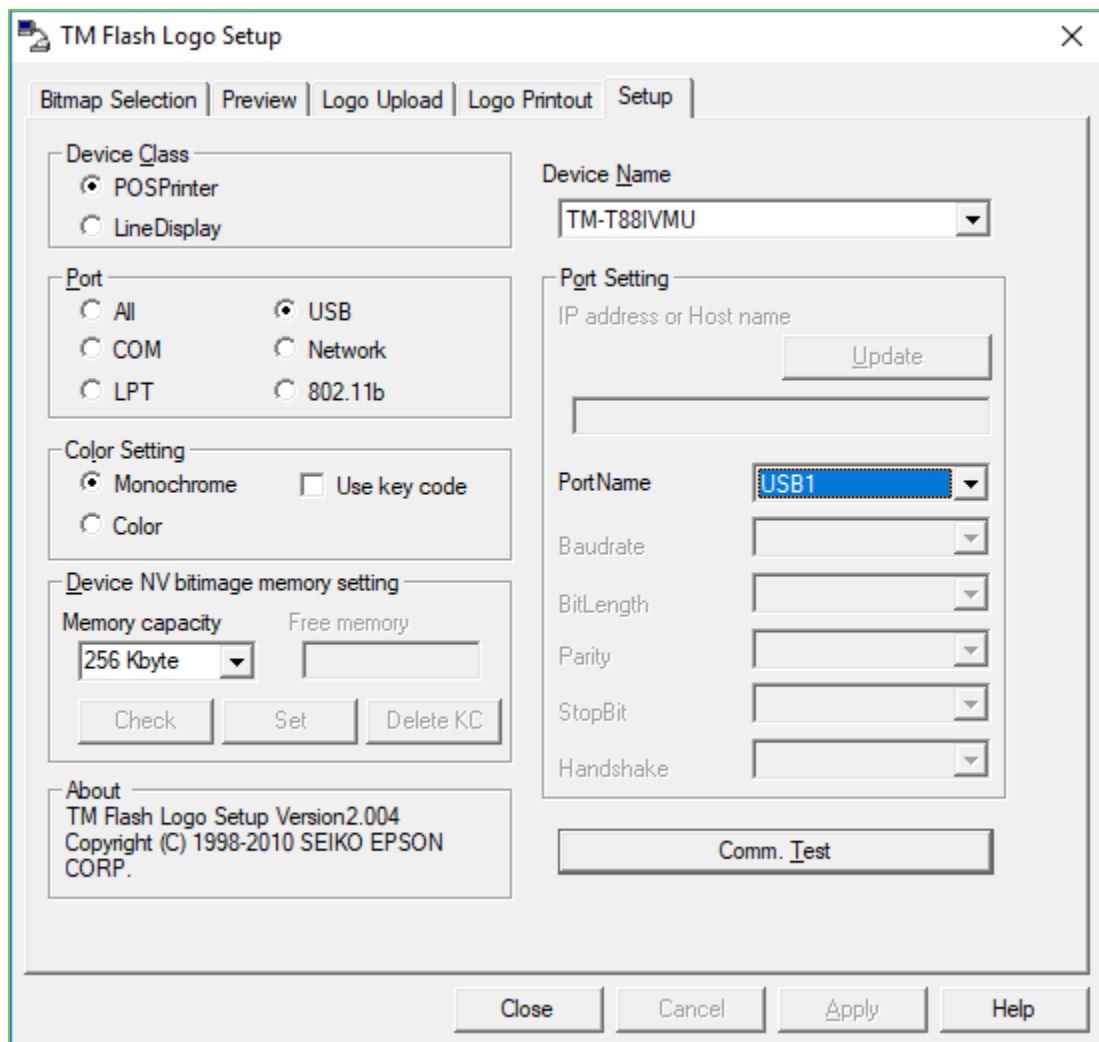
## STEP 4: RUN THE TMFLOGO.EXE

The **TMFLOGO.exe** would be in the directory that the install prompted or the one that was selected at the time of the install.

Example: C:\Program Files (x86)\EPSON\TMFLOGO\Ver260E\TMFlash.exe

### Setup Tab

Make sure the Setup Tab screen settings are completed as shown below:



The screenshot shows the 'TM Flash Logo Setup' dialog box with the 'Setup' tab selected. The settings are as follows:

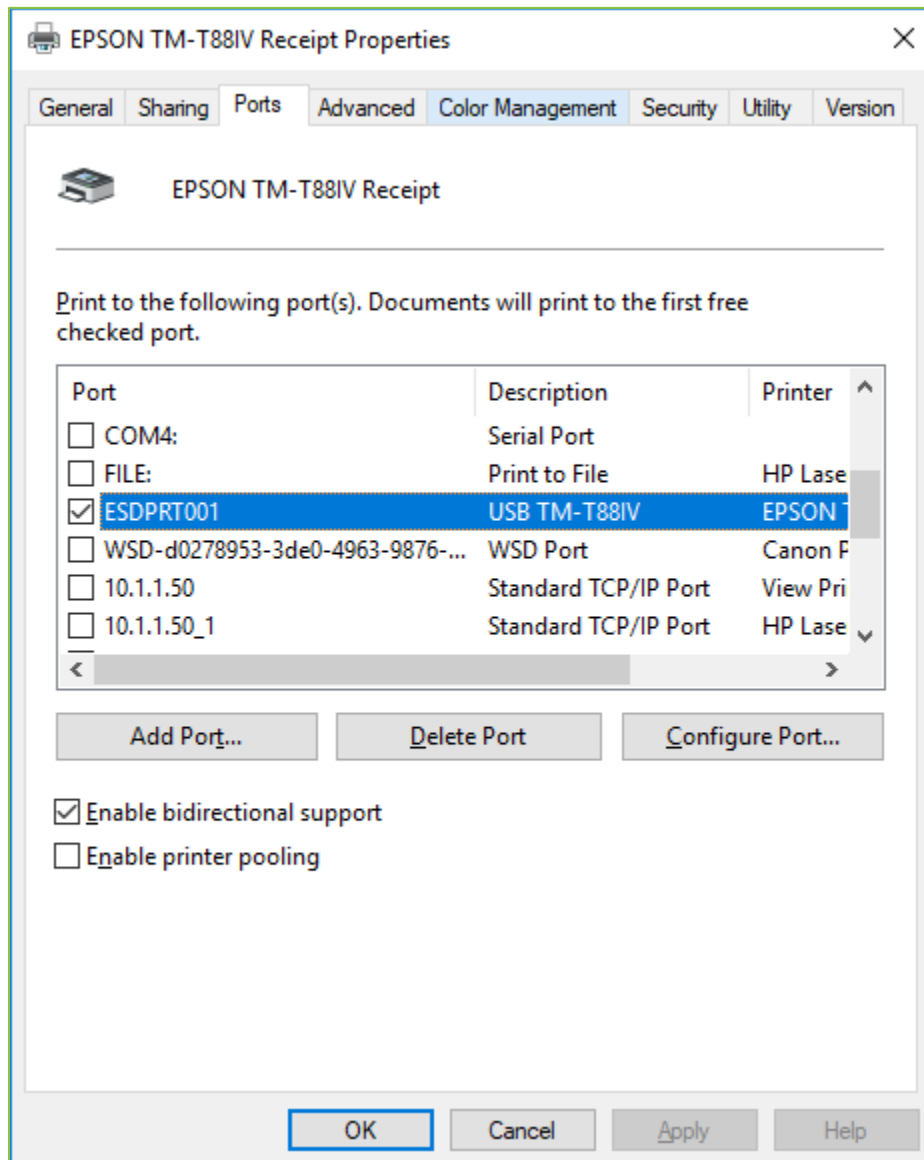
- Device Class:** POSPrinter (selected), LineDisplay
- Device Name:** TM-T88IVMU
- Port:** USB (selected), All, COM, LPT, Network, 802.11b
- Port Setting:** IP address or Host name (empty), Update button
- Color Setting:** Monochrome (selected), Use key code (unchecked), Color
- Device NV bitimage memory setting:** Memory capacity: 256 Kbyte, Free memory (empty), Check, Set, Delete KC buttons
- PortName:** USB1
- Baudrate:** (empty)
- BitLength:** (empty)
- Parity:** (empty)
- StopBit:** (empty)
- Handshake:** (empty)
- Comm. Test:** (button)
- About:** TM Flash Logo Setup Version 2.004, Copyright (C) 1998-2010 SEIKO EPSON CORP.
- Buttons:** Close, Cancel, Apply, Help

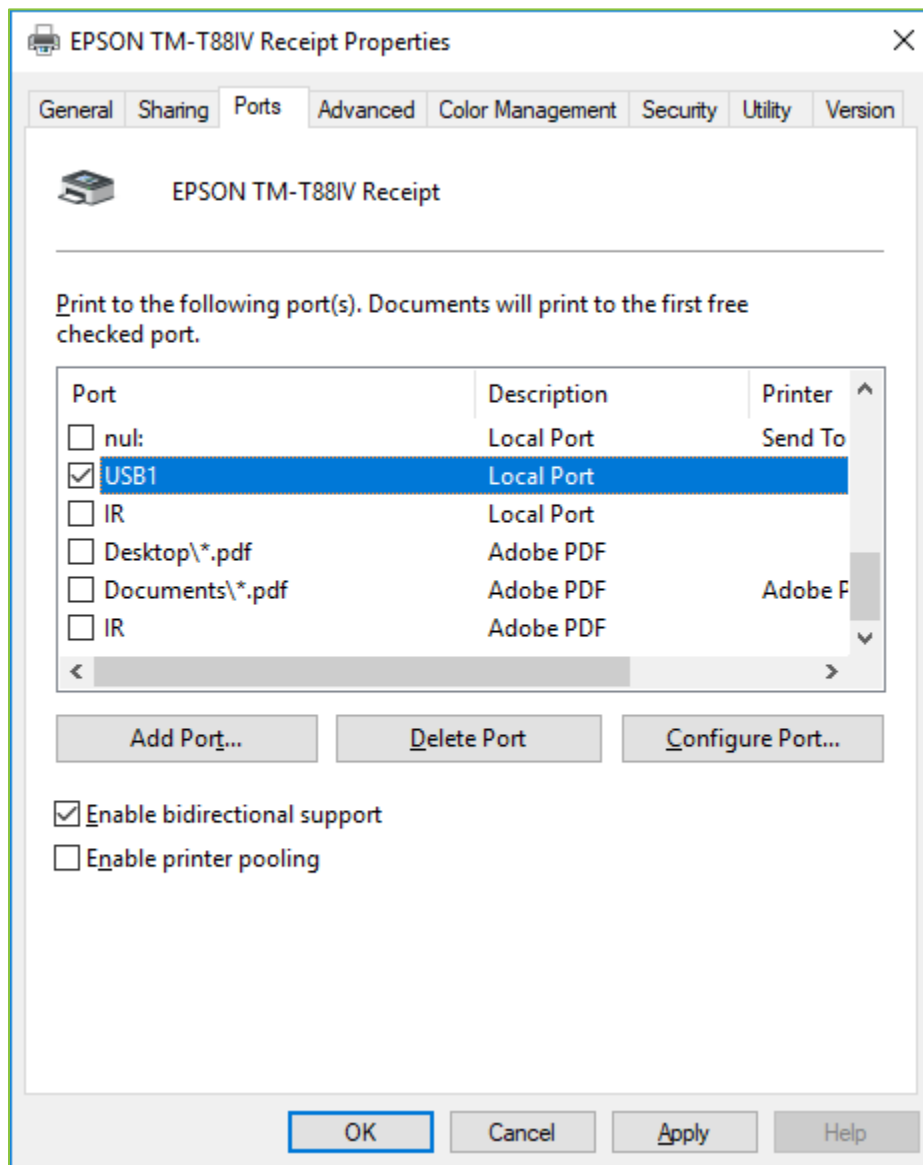
Click on **Comm. Test**

If the communication test is a success, proceed to the Bitmap Selection section.

If a Communication Error message is received a local printer port must be created for the printer.

Go to the Printer Properties of the TM88IV.





Scroll down the port section and select **USB1 Local Port**.



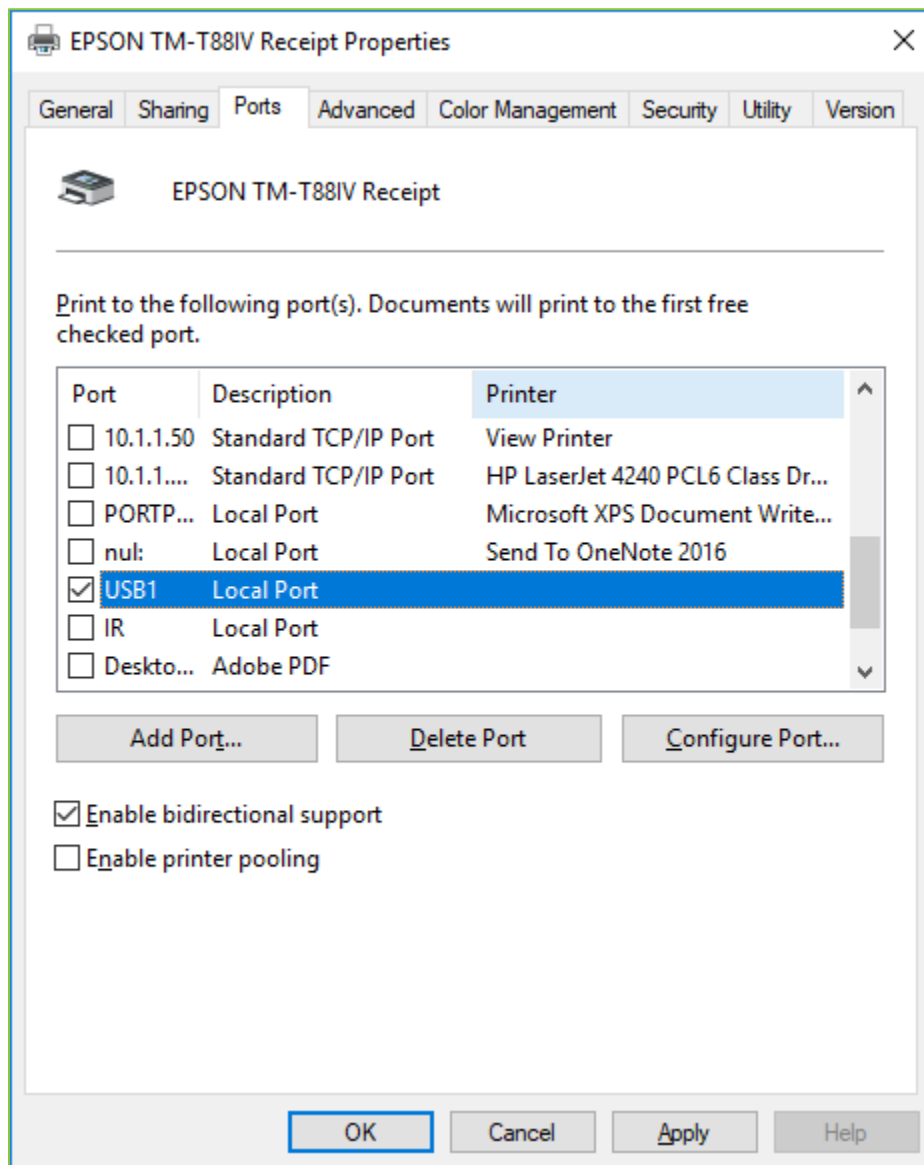
### Note

If the USB1 Local Port is not available, click on **Add Port** to add a Local Port.

Select **Local Port** from the Available port types and click on **New Port**.

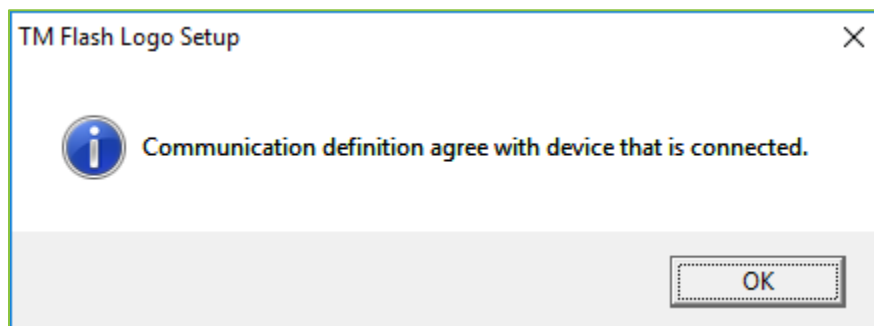
Enter a port name of **USB1** and click **OK** then **Close**

The USB1 Local Port will be displayed and should be checked. Click **Apply** and then **OK**.



Make sure your printer is ON and run another **Comm. Test** from the TM Flash Logo **Setup** tab.

The following screen will appear when communication successful with printer.





**Note**

If Comm. Test fails again, review the Setup tab. Click on the drop-down box to see if there is another USB device. If there is a USB2 change it and try the Comm. Test again to see if it is successful.

### Bitmap Selection

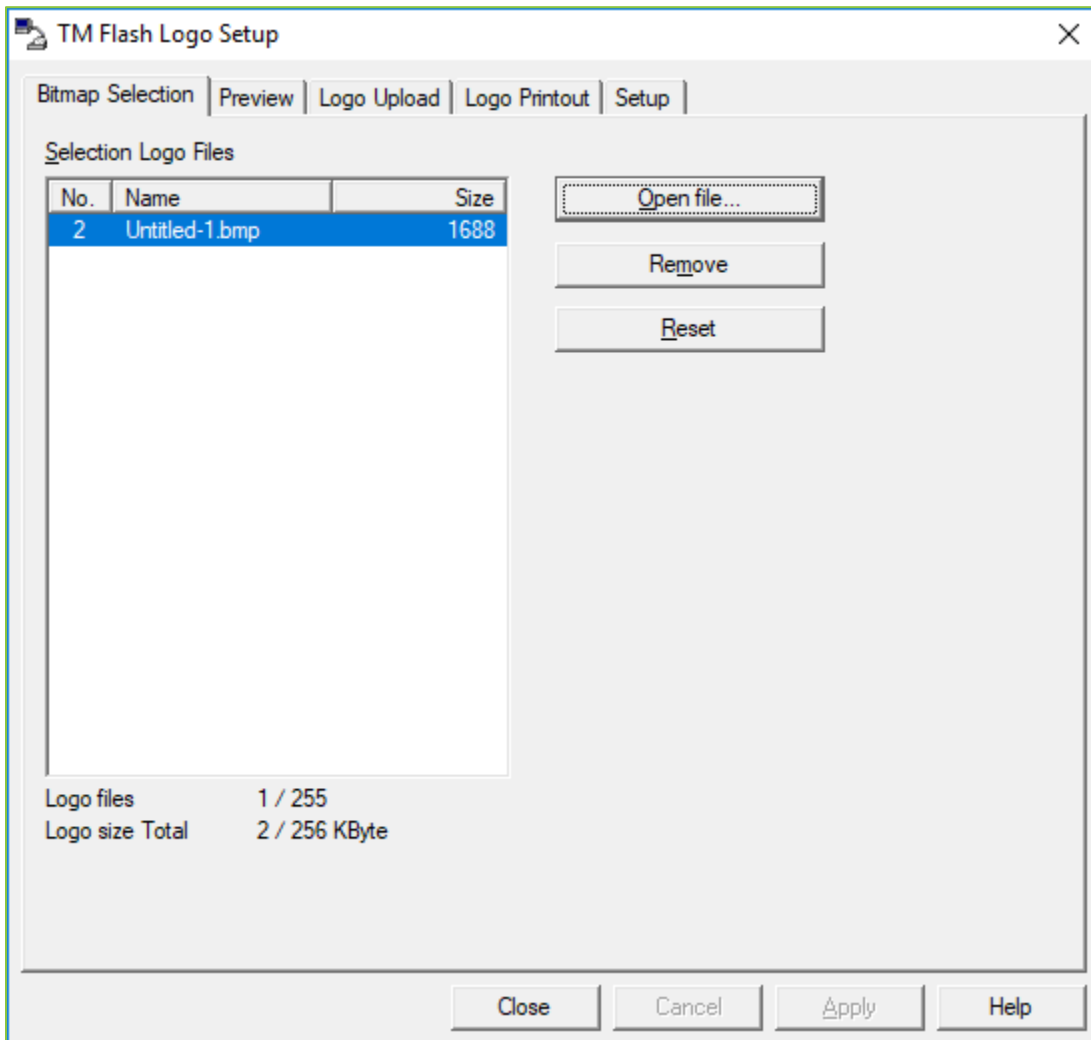
From the Bitmap Selection tab, Click on **Open file** and find the bitmap file of the logo that needs to be upload to the printer.



**Important**

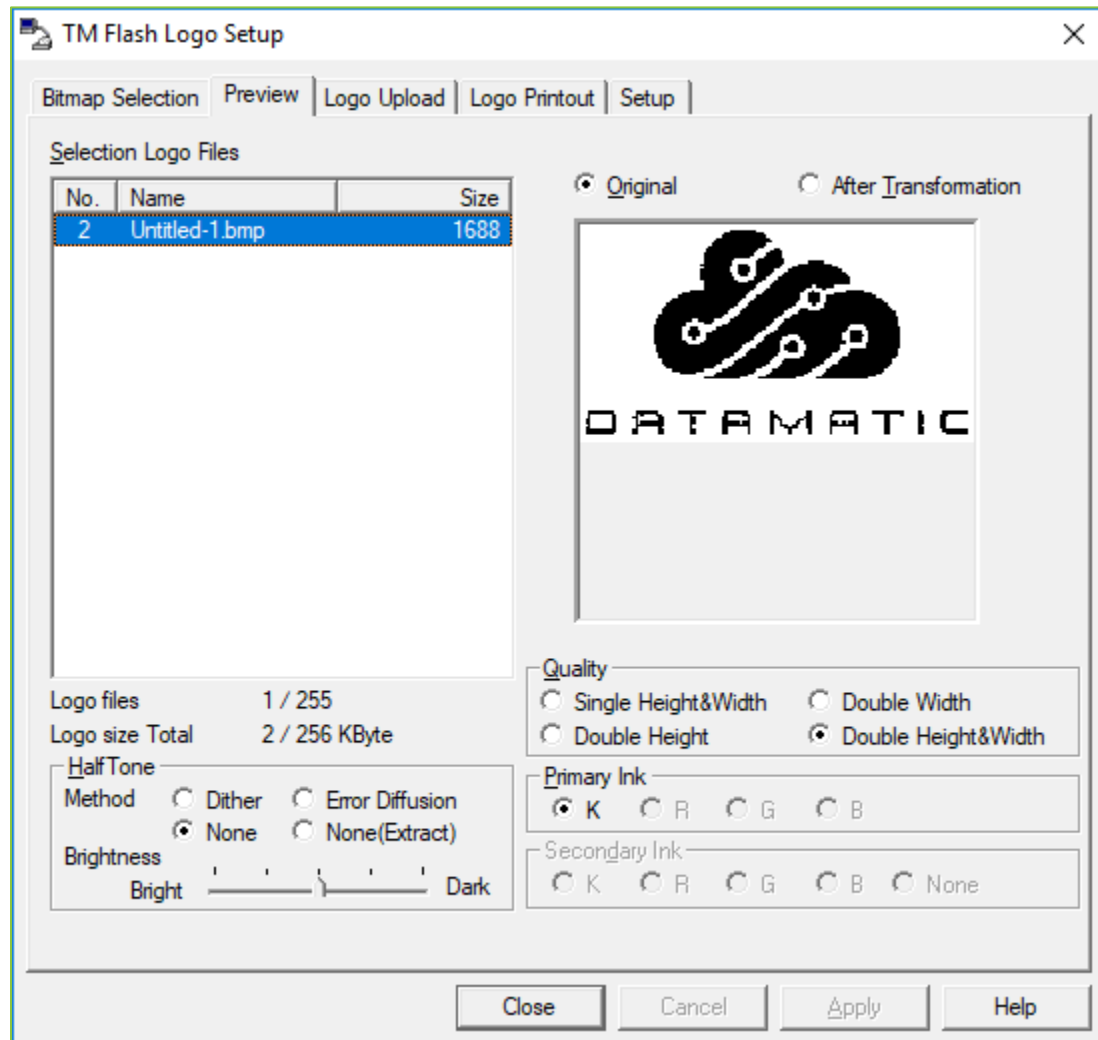
**Make sure your logo meets these criteria:**

- Width: No larger than 255 pixels (3 inch receipts)
- Format: Must be Black & White (not Gray Scale) Windows BMP



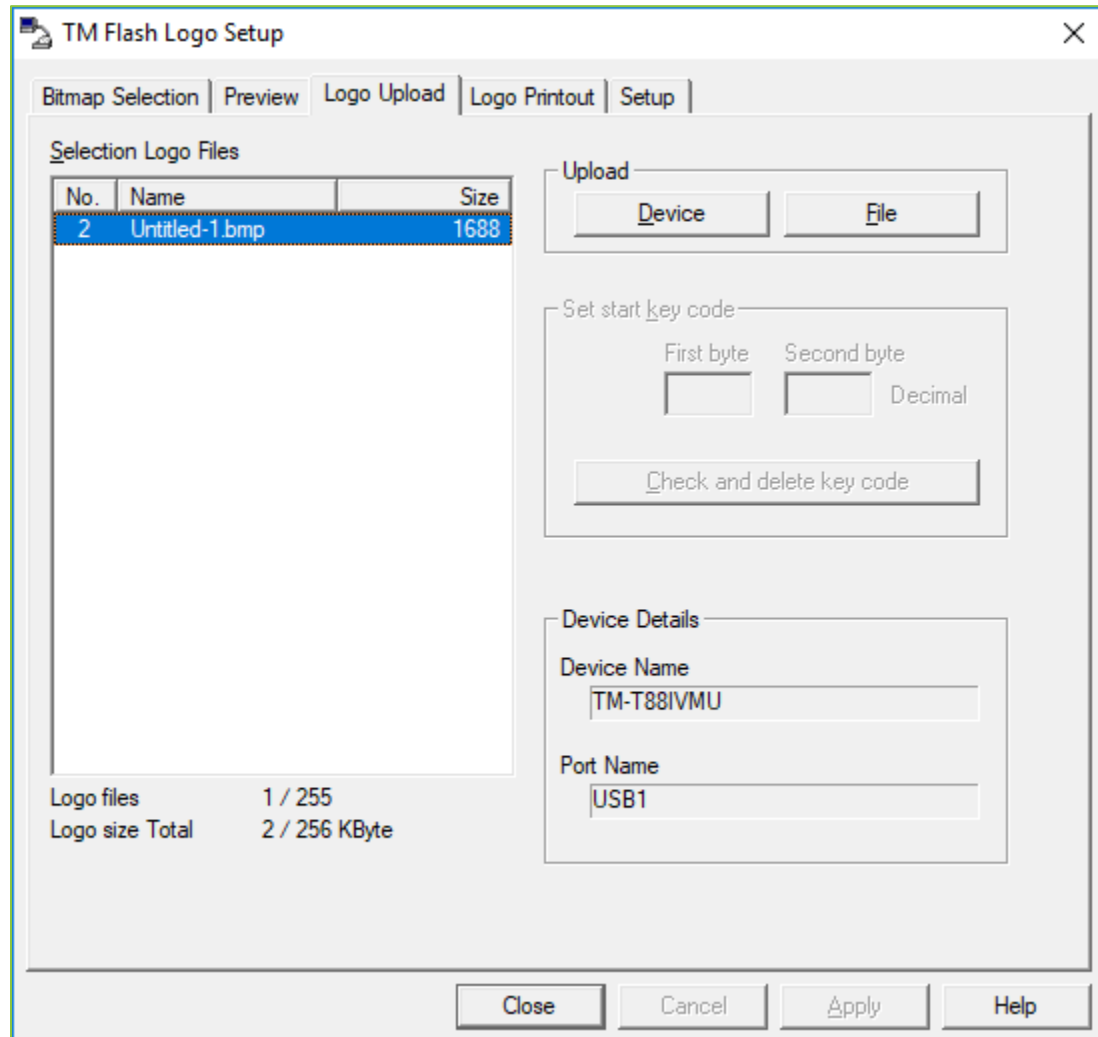
## Preview

Review the uploaded logo from the Preview tab. Click on the **logo file in the Selection Logo Files** and click on **Double Height & Width** selection in the Quality section.



## Logo Upload

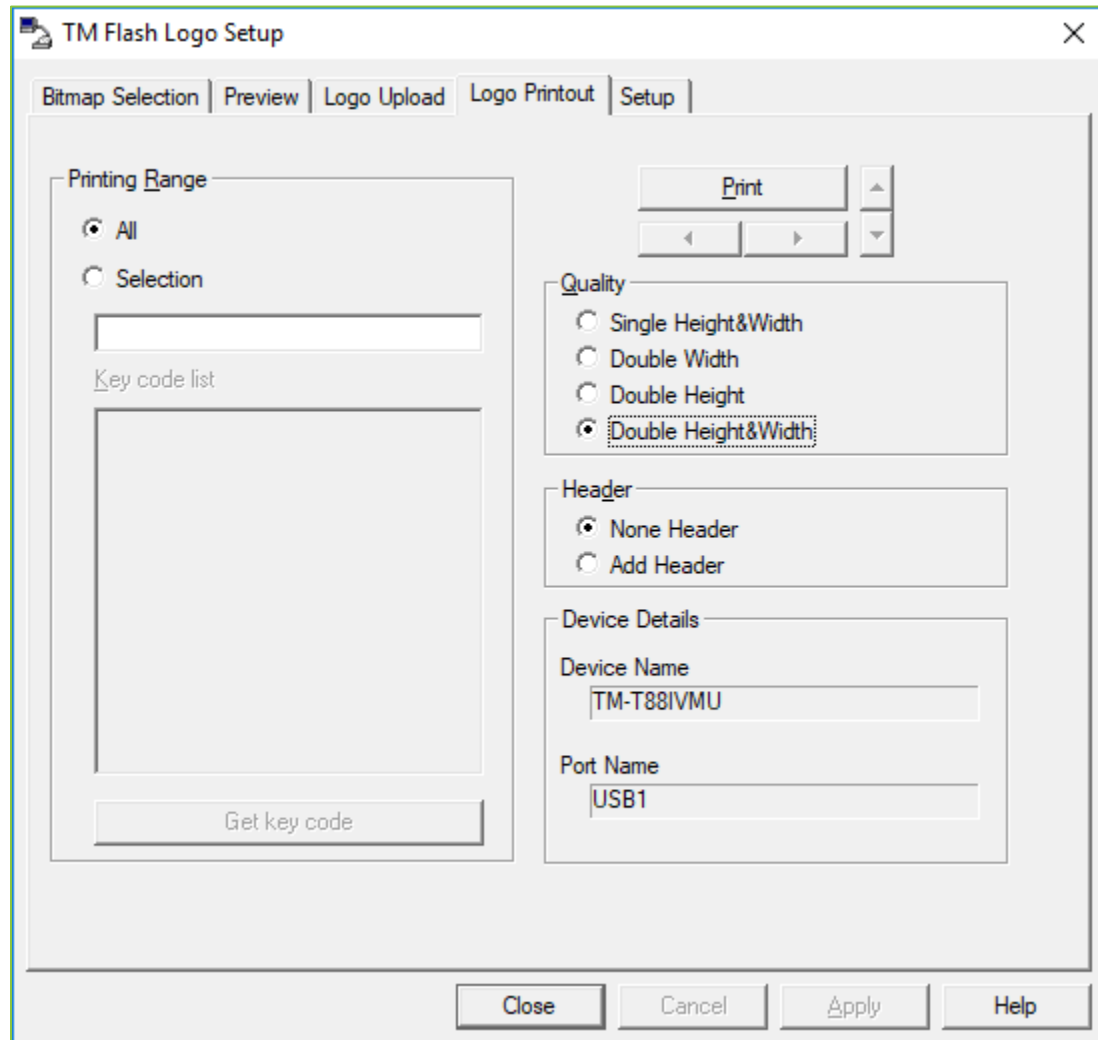
Upload the logo to the device from the Logo Upload tab. Click on the **logo file in the Selection Logo Files** and then click the **Device** button. Answer **Yes** to “All Logo files are written in the NV bit image area of the device. Continue it?” The log file will be uploading to the printer at this time. Program will display a message that the upload is finished. Logo becomes available after the printer is powered off and on.





## Logo Printout

Print a test of the logo from the Logo Printout tab. Click on the **Double Height & Width** option in the Quality section and then click print. Logo should print.



Test a receipt in VIEW.